

Oceanus ROV System – Accessories

Side-scan Towfish Sonar System

Designed,
engineered &
manufactured
on-site. | MN

A00179 ROV Accessory Side-scan Towfish Sonar System-PR5

Eliminate blind searches normally performed by grapples, divers or ROV systems. Save time by conducting wide sweep scans to track, mark and record GPS positions of interest.

Manufactured on-site from marine-grade materials, MarineNav's portable Side-scan Towfish is a portable sonar that is easily transported and deployed to scan large areas of the seabed to spot anomalies, wrecks, ghost gear and other objects. The Side-scan Towfish is towed behind your vessel while it is in motion to carry out a smooth survey of a target area simply by lowering or raising the sonar to a fixed depth, thus eliminating potential pitch and roll to provide smoother data. With GPS integrated into the screen, the Side-scan sonar can also be used as a chart plotter and is compatible with most detailed marine maps including Navionics providing full navigational charts.

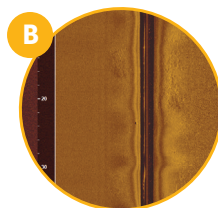


QUICK DEPLOYMENT AND SURVEYING CAPABILITIES

Topside equipped with a choice of 13" or 19" viewing screen.

Built-in selection of either AC, DC or built-in rechargeable batteries.

Deploy the Towfish over the side of boat, or from a Davit and start surveying an area in under five minutes.



THREE ADJUSTABLE SONAR FREQUENCIES

Adjust sonar to 3 adjustable frequencies of 455Khz, 800 Khz or 1.2Mhz, higher frequencies provides more detailed scans of the seabed, while lower frequencies increase sonar scan range.

CREATE WAYPOINTS AND RECORD GPS LOCATIONS

Identify found objects and anomalies in real-time, and mark targets by creating touch activated waypoints that record GPS co-ordinates. All recorded data is saved for future dive-missions by your ROV system.

MARINENAV
BUILT NORTH ATLANTIC TOUGH.
TRUSTED EVERYWHERE.



© 2023 MarineNav Ltd.

Panmure Island Rd
Panmure Island, PE COA 1R0
902 838-7011
www.marinenav.ca

Oceanus ROV System – Accessories

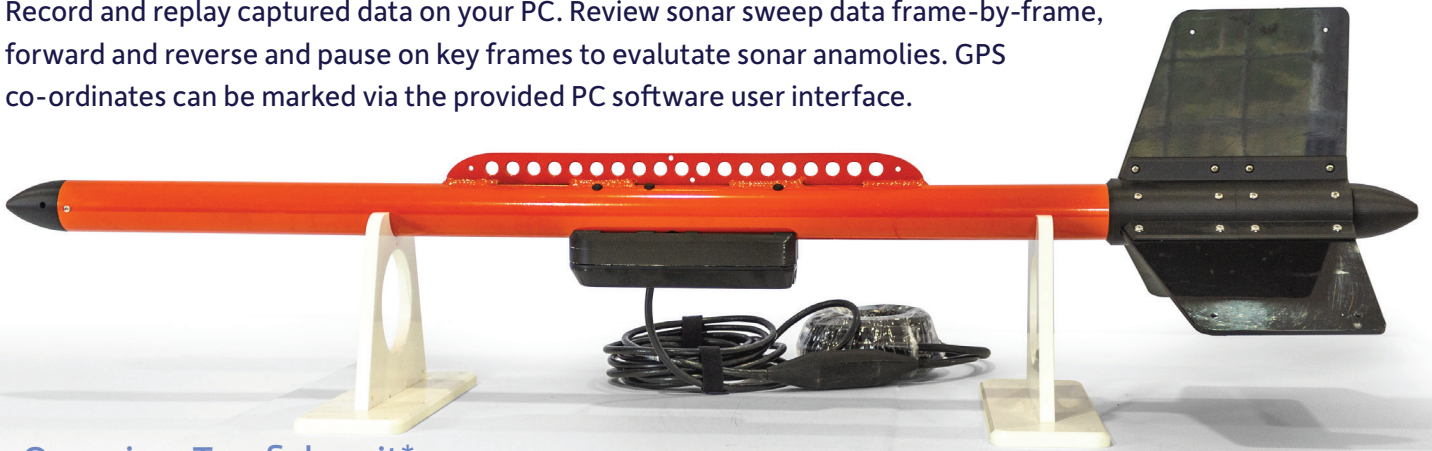
Side-scan Towfish Sonar System

Designed,
engineered &
manufactured
on-site. | MN

A00179 ROV Accessory Side-scan Towfish Sonar System-PR5

Easily scan large areas of the seabed with a single pass.

Record and replay captured data on your PC. Review sonar sweep data frame-by-frame, forward and reverse and pause on key frames to evaluate sonar anomalies. GPS co-ordinates can be marked via the provided PC software user interface.



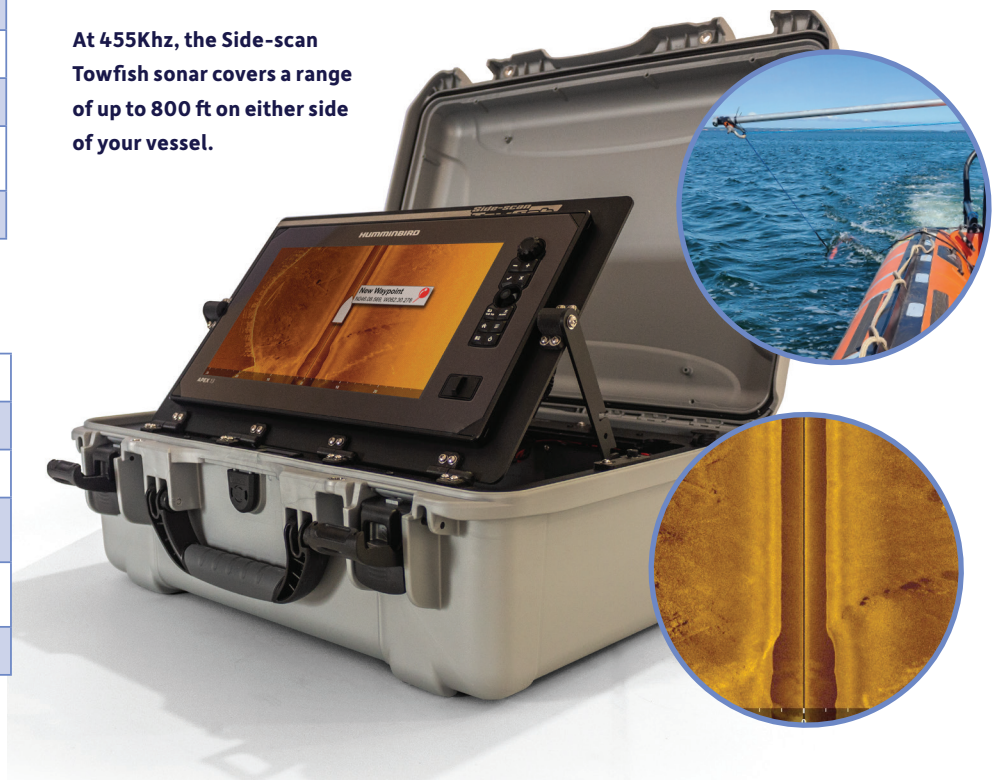
Overview Towfish unit*

Length	1265.0 mm
Height	252.0 mm
Width	314.0 mm
Towfish Tube Diameter	51.0 mm
Weight <i>(does not include Towfish cable)</i>	3.72 kg
Towfish Cable Length	9.1 meters

At 455Khz, the Side-scan Towfish sonar covers a range of up to 800 ft on either side of your vessel.

Overview Topside unit*

Length	508.0 mm
Width	355.6 mm
Depth	203.2 mm
Weight <i>(with standard 13" screen)</i>	10.61 kg
Data Storage <i>(removable SD card)</i>	32 GB
Supply Voltage (V_{in})	9 - 36VDC



Sonar Specifications*

Side-scan imaging range <i>(dependent on height from seabed)</i>	250ft (800Khz), 500ft (1.2Mhz), 800ft (455 KHz)
Down imaging range	250ft (800Khz), 250ft (1.2Mhz), 400ft (455Khz)
Standard CHIRP sonar imaging range	28-250 Khz, 1200ft depth

MARINE NAV
BUILT NORTH ATLANTIC TOUGH.
TRUSTED EVERYWHERE.

*Specifications, options, and availability subject to change with out notice. Errors and omissions excepted. We reserve the right to limit quantities. Revised April 01, 2023.